A full-page portrait of Mari Samuelson, a violinist, is the background of the image. She is shown from the chest up, holding a violin and bow. Her eyes are closed, and she has a focused expression. The lighting is dramatic, with a strong red light source from the left illuminating her face and the left side of her violin, while the rest of the scene is in deep shadow against a dark grey background. Her hair is pulled back into a bun.

MARI SAMUELSEN



MARI SAMUELSEN

Imaginative and eloquent, violinist Mari Samuelsen is known for her breath-taking artistry and **adventurous approach to programming and presentation**. With a technique that blends virtuosity and entrancing musical finesse, Mari presents an innovative musical universe that knows no barriers between the music of such composers as Anna Meredith, Max Richter, Hannah Peel, Caroline Shaw, Arvo Pärt, Pēteris Vasks and Jeff Mills, and that of Bach, Phillip Glass, Beethoven and Vivaldi. Her drive to make post classical music more accessible to all audiences, is what has turned Mari Samuelsen into an **inspiration for a global audience. She has a close relationship to Philip Glass, Max Richter and also worked closely with James Horner during the last years of his life.**

Mari has appeared as soloist and recitalist on many of the world's leading stages, including New York's Carnegie Hall, the Hollywood Bowl, London's Barbican Centre, Berlin's Konzerthaus and Paris' Philharmonie and Théâtre des Champs-Élysées. She has recently performed with the Orchestre National de Lyon, with appearances at the Berlin Philharmonie and Hamburg Elbphilharmonie, as well as the Radio France Festival in Montpellier.

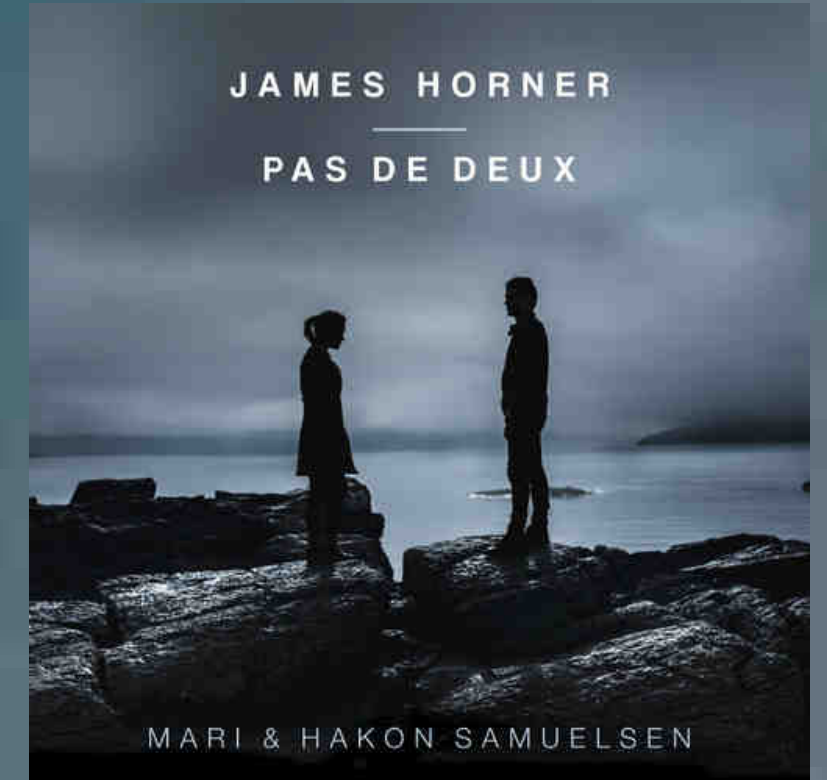
Recent and upcoming highlights has seen Mari Samuelsen perform with the Frankfurt Radio Orchestra alongside Alice Merton, returns to the BBC Concert Orchestra in London, as well as performances in Spain at the Palau de la Música in Barcelona, Amsterdam's Concertgebouw, Bratislava, Slovakia with Slovak Philharmonia at Viva Musica! Festival; Ottawa, Canada, and visits to CC Hasselt and Leuven, Belgium with Casco Philharmonic.

In terms of collaborations, she regularly works with the British composer, Max Richter, as a soloist in concert performances of both his Recomposed and Memoryhouse, as well as on his recent Deutsche Grammophon album, Voices. Mari Samuelsen's recent work also includes collaborations with electronic music artists Jeff Mills and Dubfire and multimedia artist Philipp Geist. Her **ground-breaking explorations of contemporary art and classical music** as artistic director of Oslo's Yellow Lounge for its first two seasons reaffirm her position as an innovative artist who is reaching out to new audiences.

WWW.MARISAMUELSEN.COM



ALBUMS



Mari is an exclusive Deutsche Grammophon artist. 2022 marks the release of her second album for the distinctive Yellow Label, named LYS, meaning “light” in Norwegian features new commissions for her from the likes of Hannah Peel, Anna Meredith, Laura Massoto and MEREDI as well as existing works from Caroline Shaw and Hildur Guðnadóttir. In 2019 she released MARI, her debut recording, and was lauded by Gramophone magazine for her ‘Seriously impressive playing...hand-crafted precision.’ As well as dominating the classical charts, MARI and her previous albums were also number 1 hits in the popular charts in her home county of Norway. Mari Samuelsen also has recorded the world premiere of James Horner’s double concerto for violin, cello and orchestra with her brother, Håkon Samuelsen.

Her presence, popularity and the impact of her music among new audiences is astonishing, having reached 34 million views in her YouTube video of Summer from Vivaldi’s The Four Seasons alone.

MIDNIGHT SUN

MARI SAMUELSEN

VISUALS & LIGHT NATHAN W. SCHEURER

IN COLLABORATION WITH KITTY MCNAMEE (DIRECTOR, CHOREOGRAPHY)

Mari Samuelsen stuns audiences with an immersive multi-genre show combining: atmospheric music, visual arts, dazzling light design and choreography.

Following the success of similar programmes such as Yoga, Meditation & Sleep by Max Richter, this is a format that guarantees success amongst young & new audiences to violin, orchestral and post classical music, led by Mari's own global fanbase.

The distinctive programme can be presented with:

- Small Orchestra: with choreography (2 dancers optional) and the intensity of digital art and visuals on screens.
- Chamber Ensemble , 2 dancers (optional) and stronger focus on the meditative music, enriched by light design and visuals.

Music by Max Richter, Hannah Peel, Caroline Shaw, Anna Meredith, Ludovico Einaudi, Glass to mention but a few.

TRAVEL PARTY

Mari Samuelsen

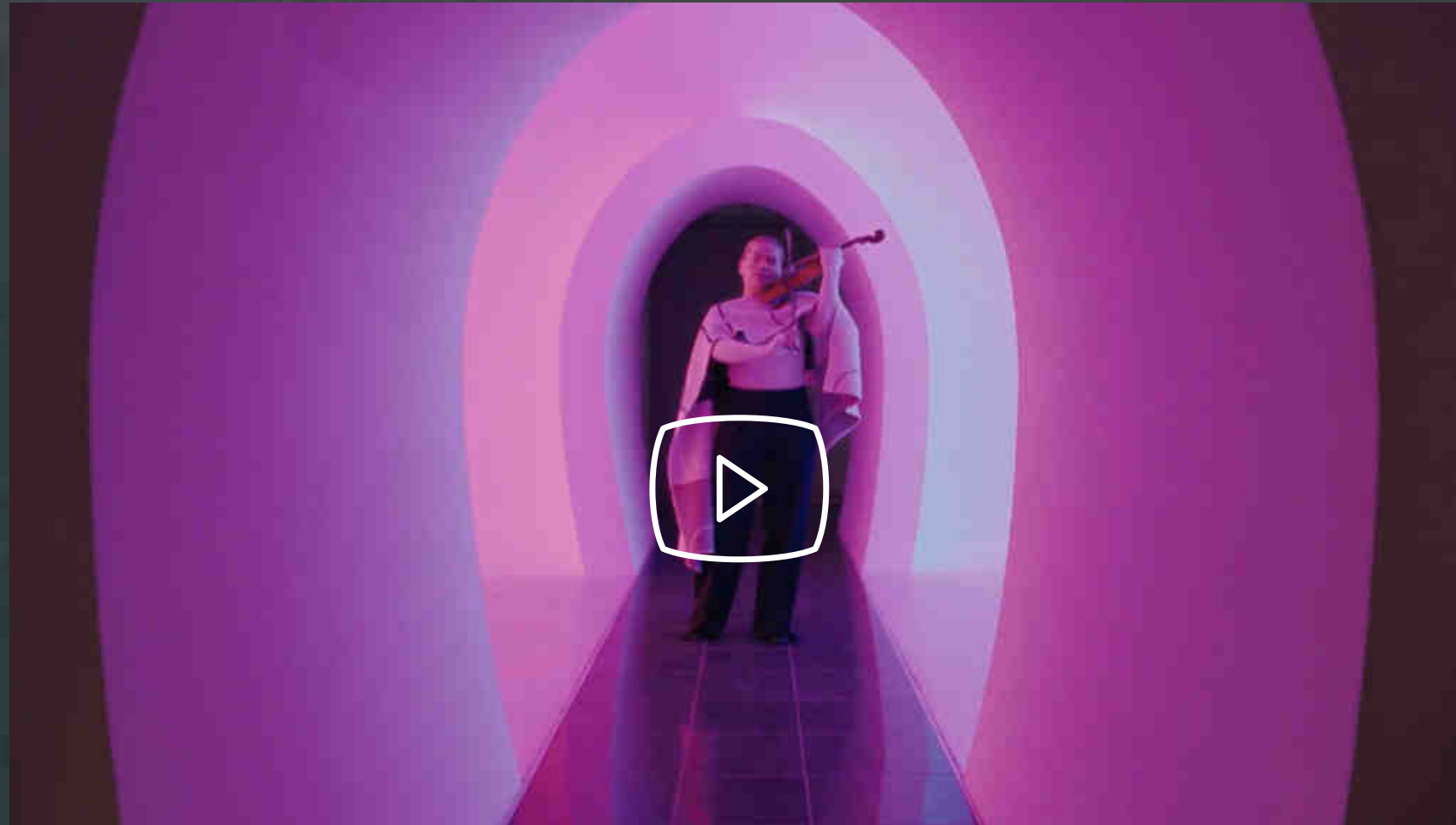
2 dancers (optional)

Kitty McNamee (subject to performance)

STAGE PLANS AT THE END OF THIS PRESENTATION

MIDNIGHT SUN

INSPIRATION VIDEOS





NATHAN W. SCHEUER

VISUAL CREATION AND LIGHT DESIGN

CREATIVE DIRECTION, DIRECTION & CHOREOGRAPHY

Nathan W. Scheuer is a lighting and projection designer of theatre, dance, opera, and concerts and his work has been seen across the United States, as well as in Canada, Mexico, Europe, and Australia. In addition to having designed for Mandy Patinkin, Selena Gomez, Alice Cooper, as well as companies like The Muny, Travis Wall's Shaping Sound, The Repertory Theatre of St. Louis, Soul Arts Productions, Barak Ballet, Broadway in Chicago, Los Angeles Ballet, Nathan has also had the pleasure of working with the New York City Ballet, San Francisco Opera, Paris Opera Ballet at Lincoln Center Festival, Center Theatre Group, The Joyce, Spectrum Dance, & The Atlantic Theater Company. Nathan received his B.F.A. from The Conservatory of Theatre Arts at Webster University and was the 2012 Gilbert V. Hemsley, Jr. Internship in Lighting. Proud member of United Scenic Artists, Local 829.



WWW.NWSCHEUERDESIGN.COM



Kitty McNamee

Kitty McNamee is an artist, a creator and most importantly a collaborator.

Her early years in LA were spent honing her craft as Artistic Director of Hysterica Dance Co., a consistently prolific and creative collective that redefined dance in Los Angeles. Her unique approach to direction and choreography was declared by Dance Magazine to possess "an outsize talent for that most elusive gift, originality."

Kitty has collaborated extensively with the LA Philharmonic; developing new productions of Rite of Spring, Firebird, Bolero, Esa Pekka Salonen's Wing on Wing, A Young Person's Guide to the Orchestra and more. Ballets includes RIFT commissioned by Cabrillo Festival of Contemporary Music and the Kennedy Center, the creation of the new ballets Traces and Transit for National Choreographer's Initiative and colony for LA Ballet's NEXT Wave Series.

Kitty moves effortlessly between her work for the country's largest opera houses to commercials for Target, Adobe MAX, Mercedes Benz as well as an array of TV and Film productions.

Opera work includes Romeo et Juliette, La Traviata, Don Carlo, La Rondine, Lucia di Lammermoor and Tales of Hoffman for LA Opera, San Francisco Opera, San Diego Opera and Lyric Opera of Chicago. Theater credits include Secret Cinema's groundbreaking live performances with Laura Marling in London, the World Premiere of Colony Collapse (commissioned by Oregon Shakespeare Festival), Sense and Sensibility (South Coast Rep), The Fantasticks (Pasadena Playhouse), Midsummer Night's Dream (LA Phil/Disney Hall), Man of LaMancha (Reprise!) and Sondheim's 75th (Hollywood Bowl).



KITTYMCNAMEE.COM

PRESS

"Coruscating repeating patterns leaping off the soundboard as if fingers were treading on hot coals"

Gramophone Magazine

When she plays the air freezes... She can hold together the piece stretching the sensible bows over the long length. With her you can hear connections that otherwise wouldn't be so clear in the hall – Music is understood with Mari."

Frankfurter Allgemeine

[Horner's]."Pas de Deux was given a spell binding rendition by the Samuelsens and LA Phil"

LA Times

"(...) Samuelsen exchanges the dogged intensity of traditional readings for a radiant eloquence that traces the music's emotional peaks and troughs with a compelling sense of inevitability"

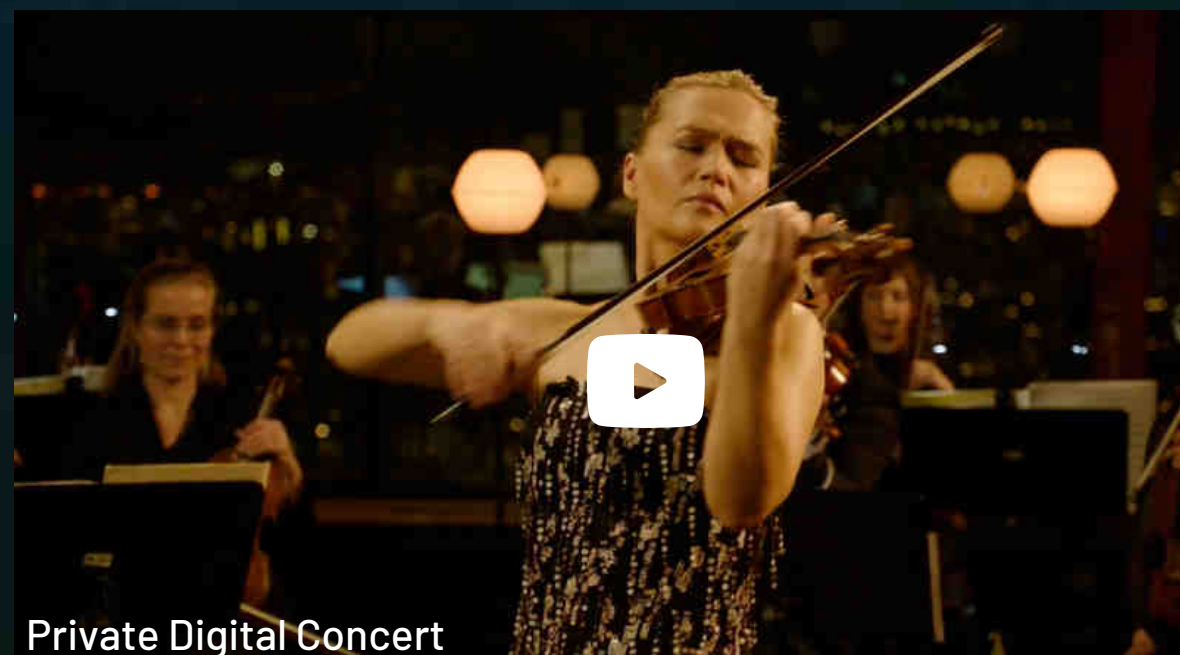
BBC Music Magazine

"Her playing combines virtuosity with musical finesse. She has performed as a soloist in the most renowned international concert halls, but also loves the loft and lounges of new music."

Tonart Magazine



VIDEOS





CONTACT

MOEMA PARROTT

MOEMA.PARROTT@HARRISONPARROTT.CO.UK

+44 (0) 7884 664051

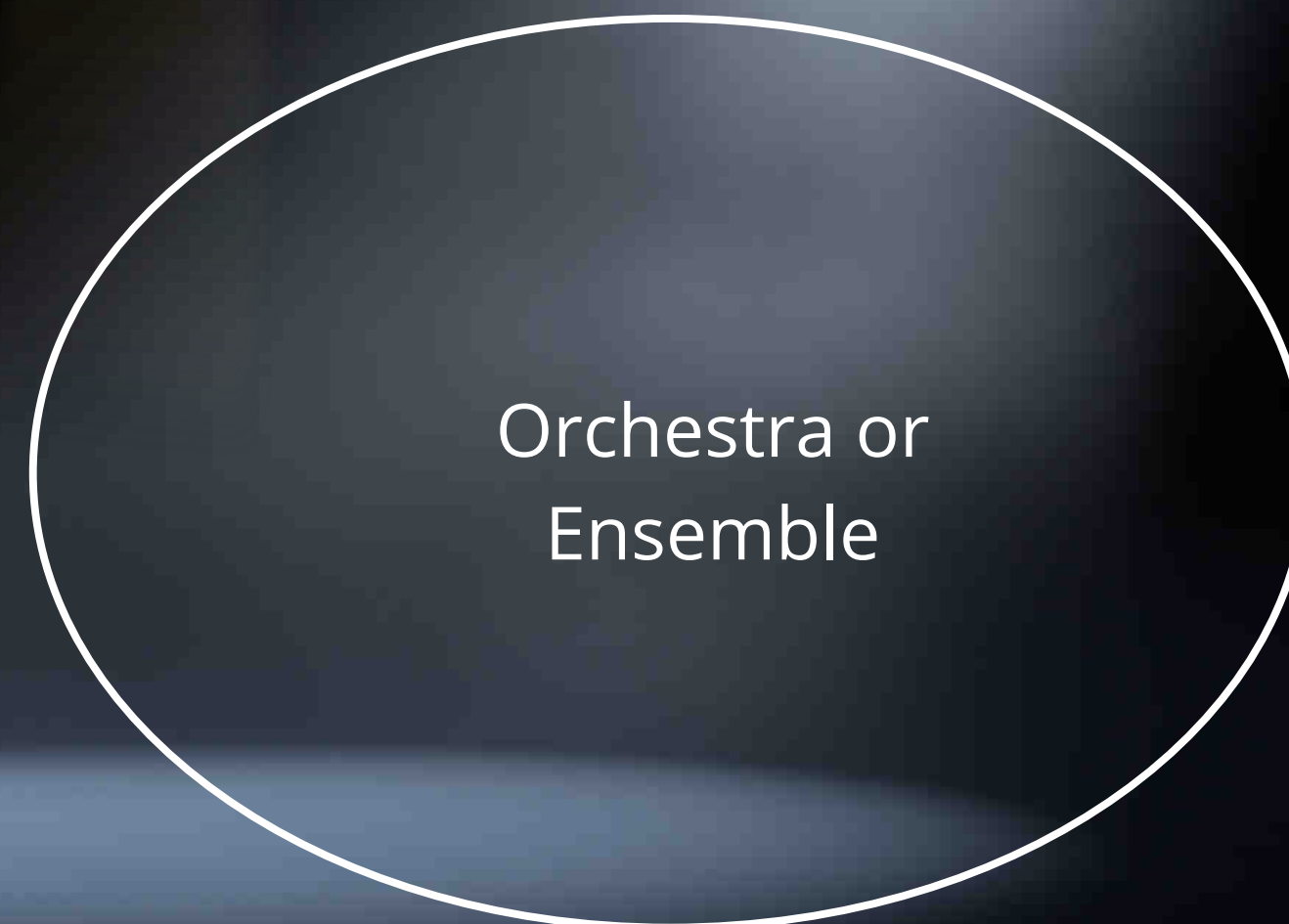
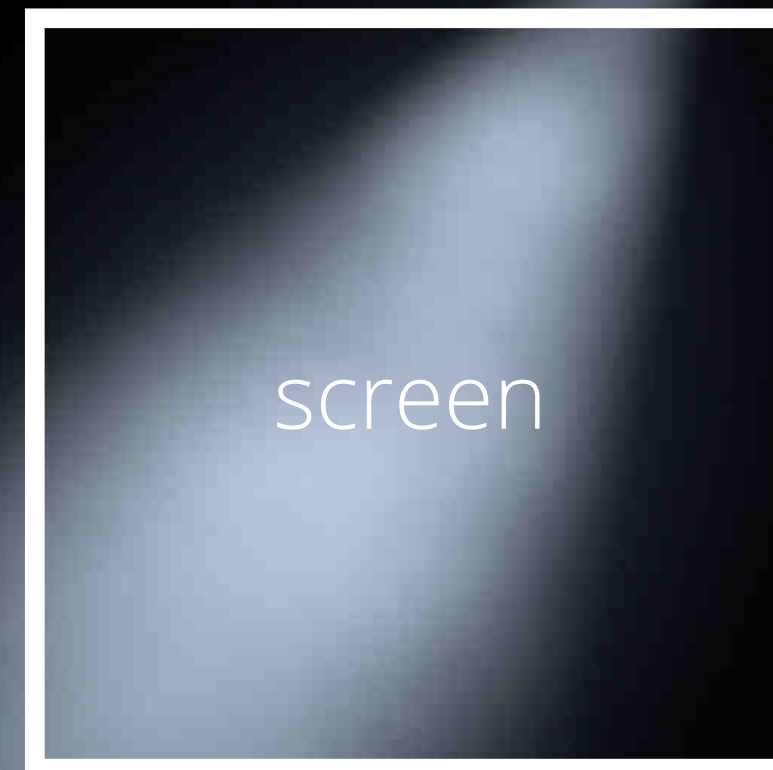
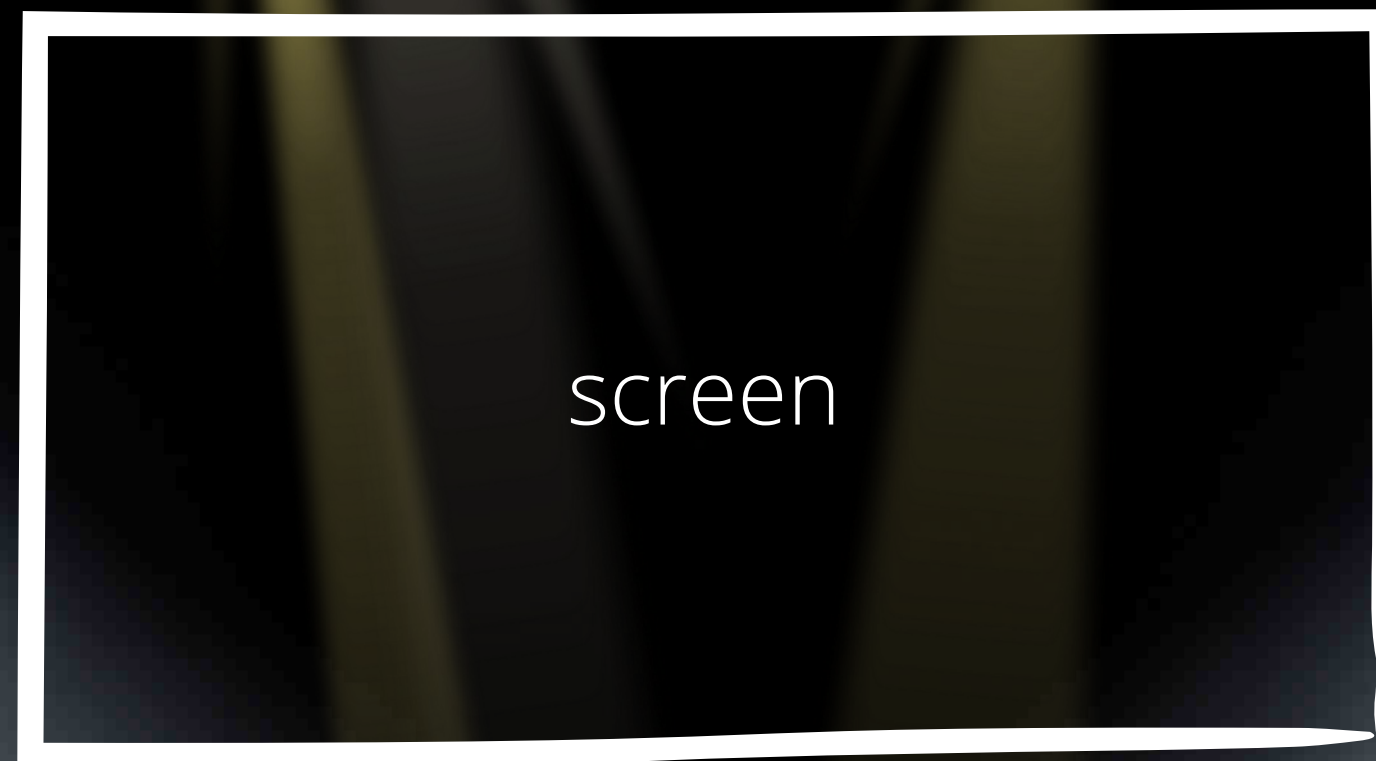
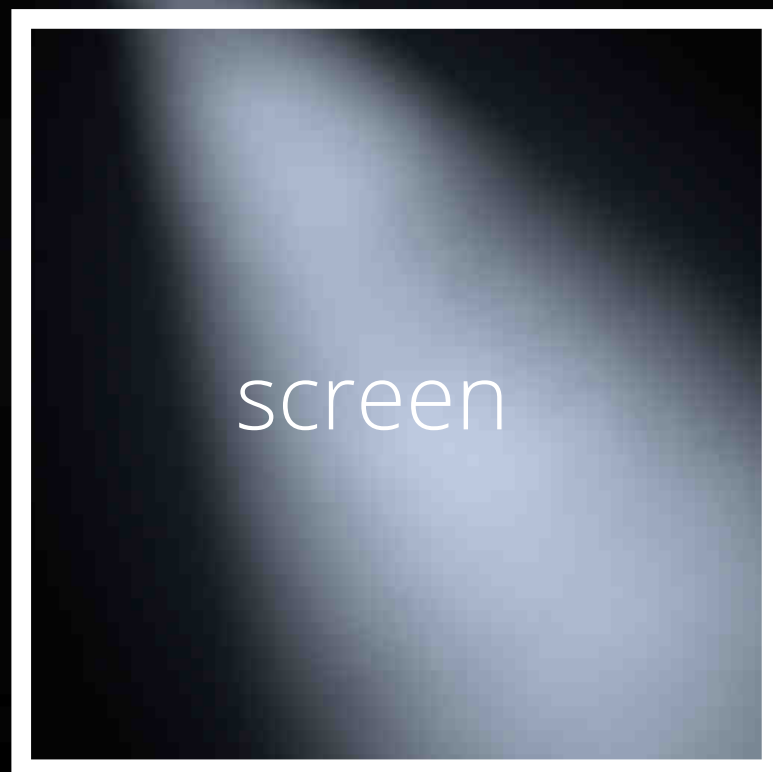
TABITHA MCGRATH

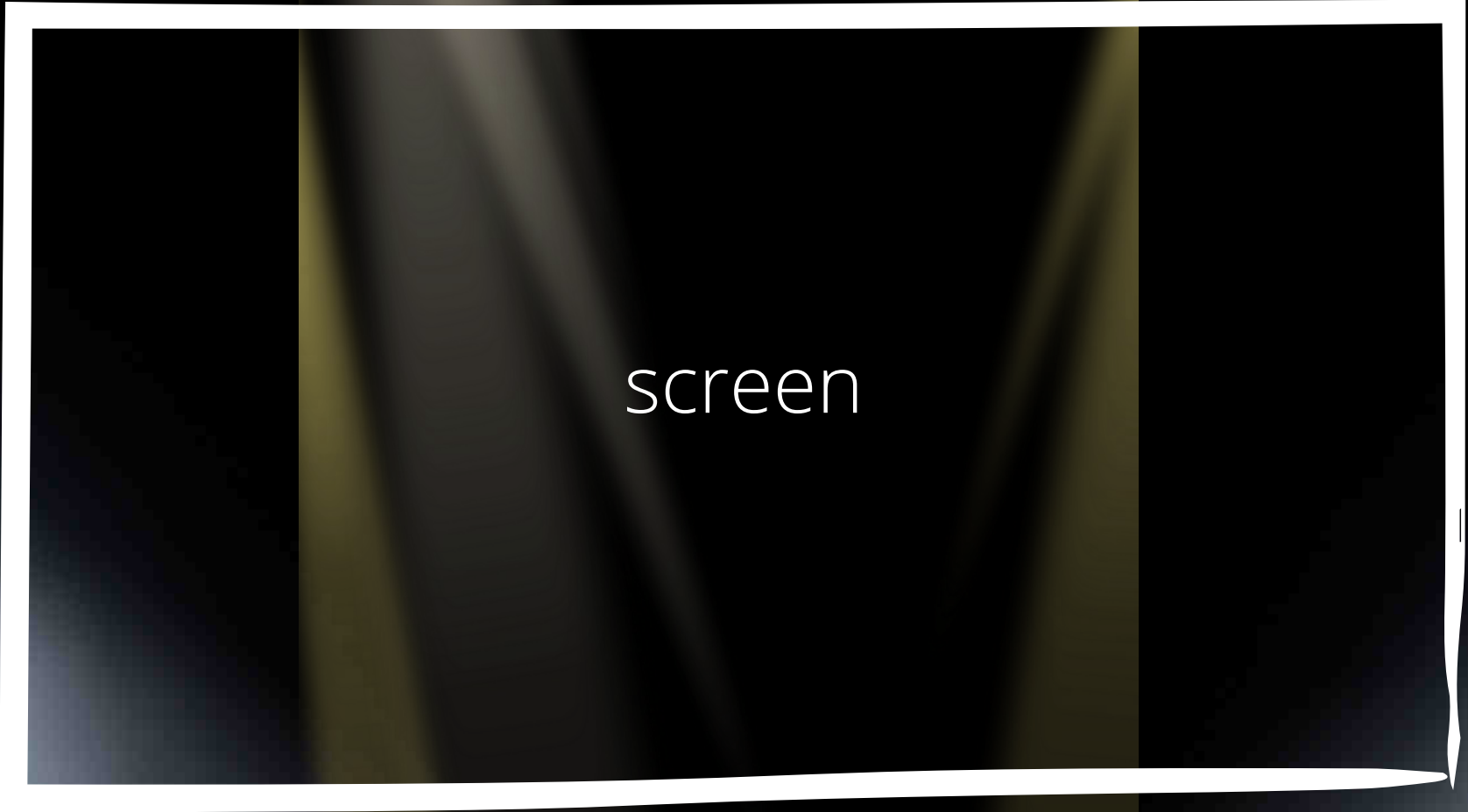
TABITHA.MCGRATH@HARRISONPARROTT.CO.UK

+44 (0) 7507 408331

WWW.POLYARTS.CO.UK







screen



Vn2

Vn2

Vn2

Va

Va

Cello

Bass

Cello

Mari

Vn1

Vn1

Vn1